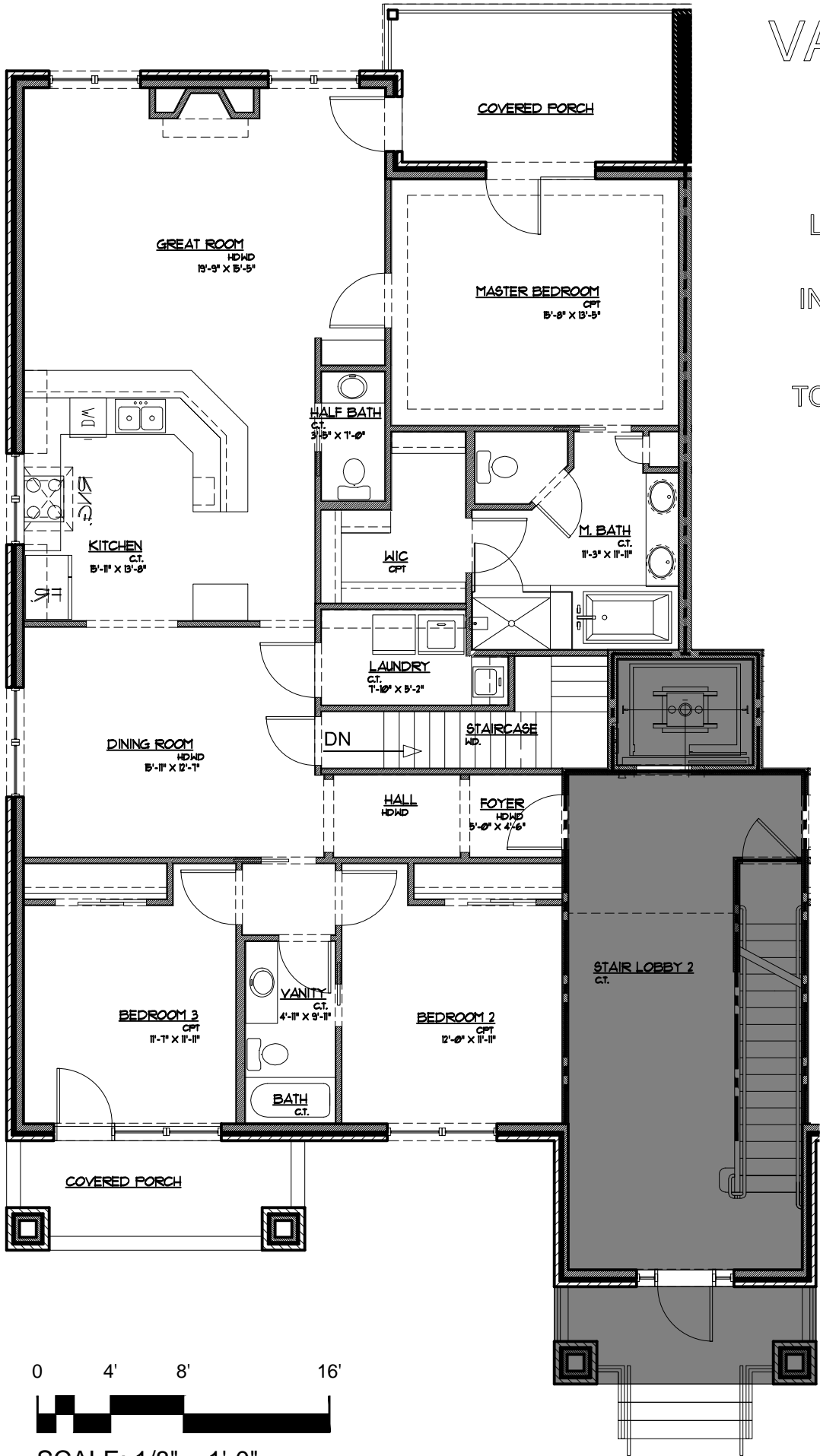


# VALHALLA VISTAS

15325 ROYAL  
TROON AVE.  
LOUISVILLE, KY

INTERIOR AREA:  
1,802 SF

TOTAL INTERIOR  
LIVING AREA:  
2,498 SF



0 4' 8' 16'



SCALE: 1/8" = 1'-0"

# VALHALLA VISTAS

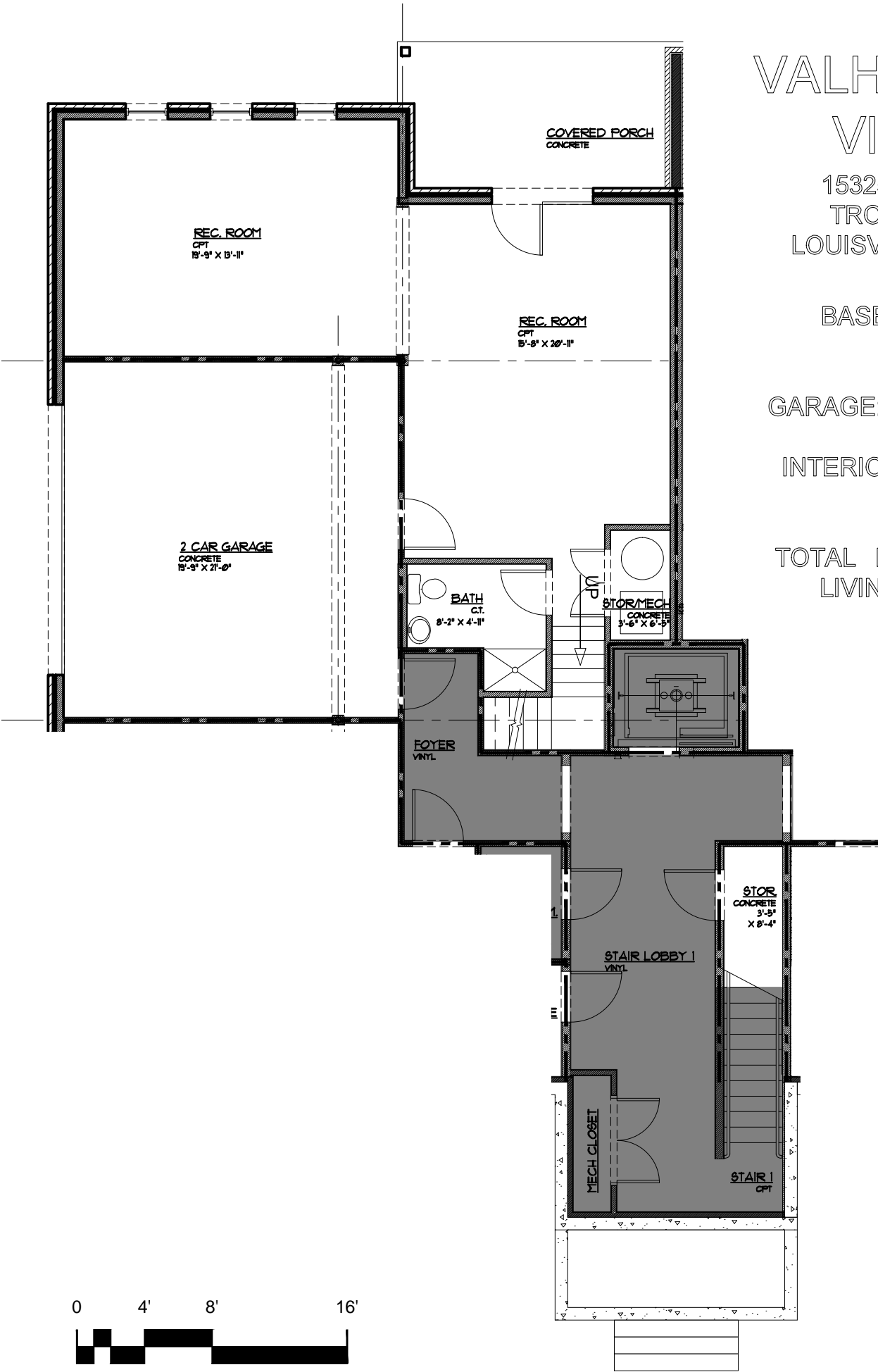
15325 ROYAL  
TROON AVE.  
LOUISVILLE, KY

BASEMENT &  
GARAGE

GARAGE: 415 SF

INTERIOR AREA:  
696 SF

TOTAL INTERIOR  
LIVING AREA:  
2,498 SF



0 4' 8' 16'



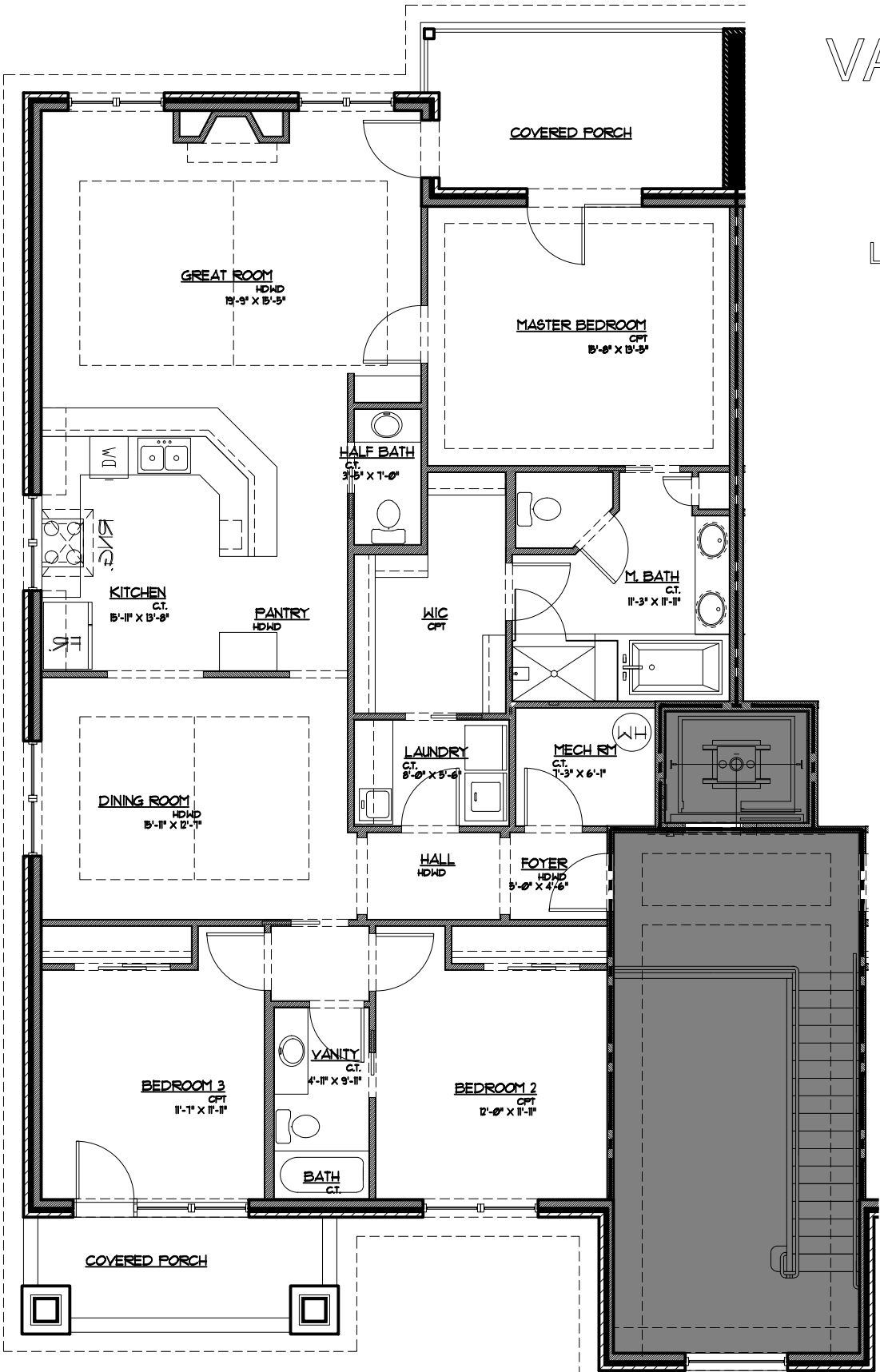
SCALE: 1/8" = 1'-0"

# VALHALLA VISTAS

15327 ROYAL  
TROON AVE.  
LOUISVILLE, KY

TOTAL  
INTERIOR  
AREA:  
1,802 SF

TOTAL  
INTERIOR  
LIVING AREA:  
1,802 SF



0 4' 8' 16'



SCALE: 1/8" = 1'-0"

# VALHALLA VISTAS

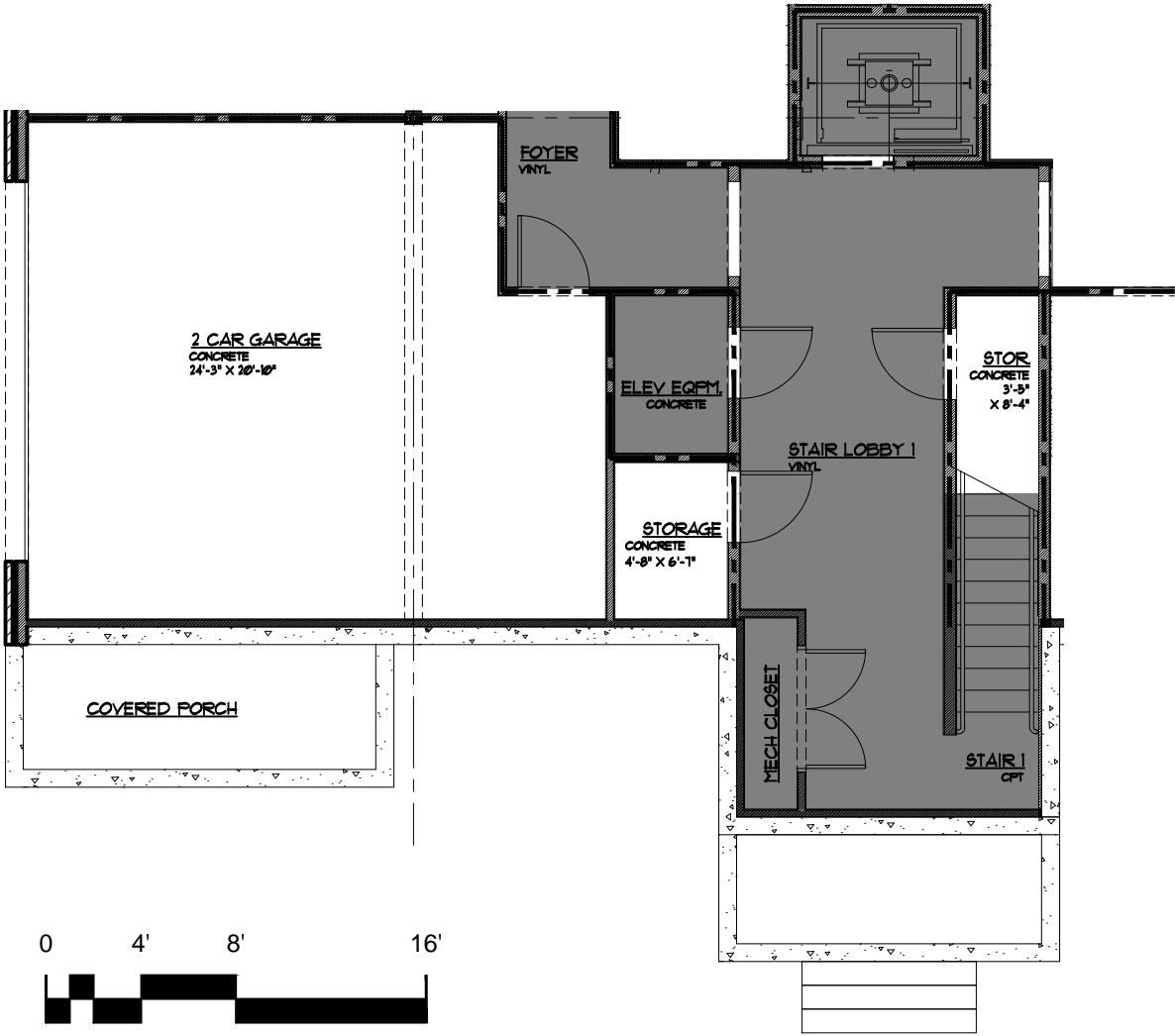
15327 ROYAL  
TROON AVE.  
LOUISVILLE, KY

BASEMENT &  
GARAGE

GARAGE: 474 SF

STORAGE: 31 SF

TOTAL INTERIOR  
LIVING AREA:  
1,802 SF



SCALE: 1/8" = 1'-0"



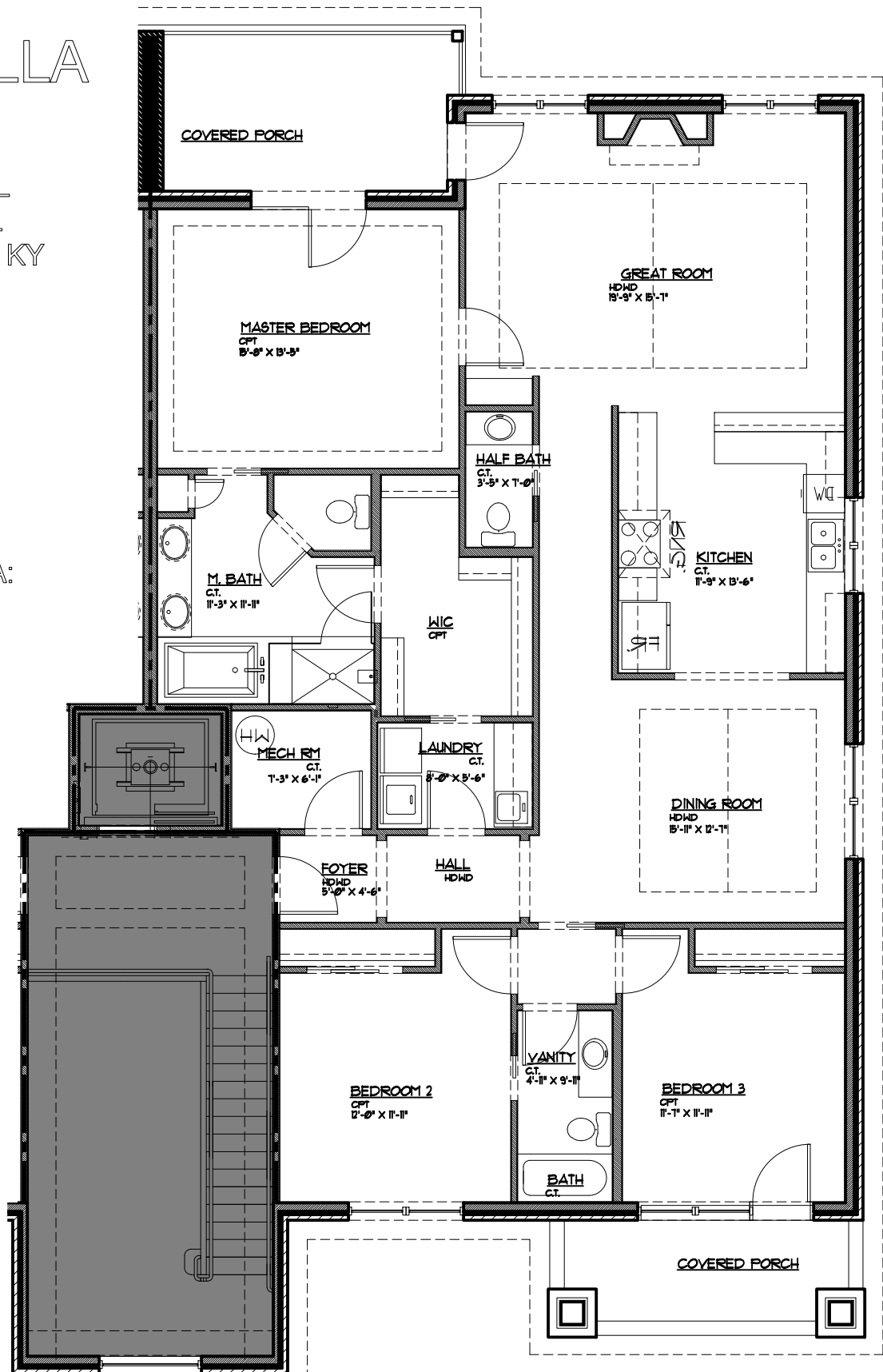
1377 BARDTOWN ROAD  
LOUISVILLE, KY 40203  
PH: 502.261.1000  
FAX: 502.261.1001  
WWW.STUDIOAARCH.COM

# VALHALLA VISTAS

15332 ROYAL  
TROON AVE.  
LOUISVILLE, KY

TOTAL  
INTERIOR  
AREA:  
1,802 SF

TOTAL  
INTERIOR  
LIVING AREA:  
1,802 SF



0 4' 8' 16'



SCALE: 1/8" = 1'-0"

# VALHALLA VISTAS

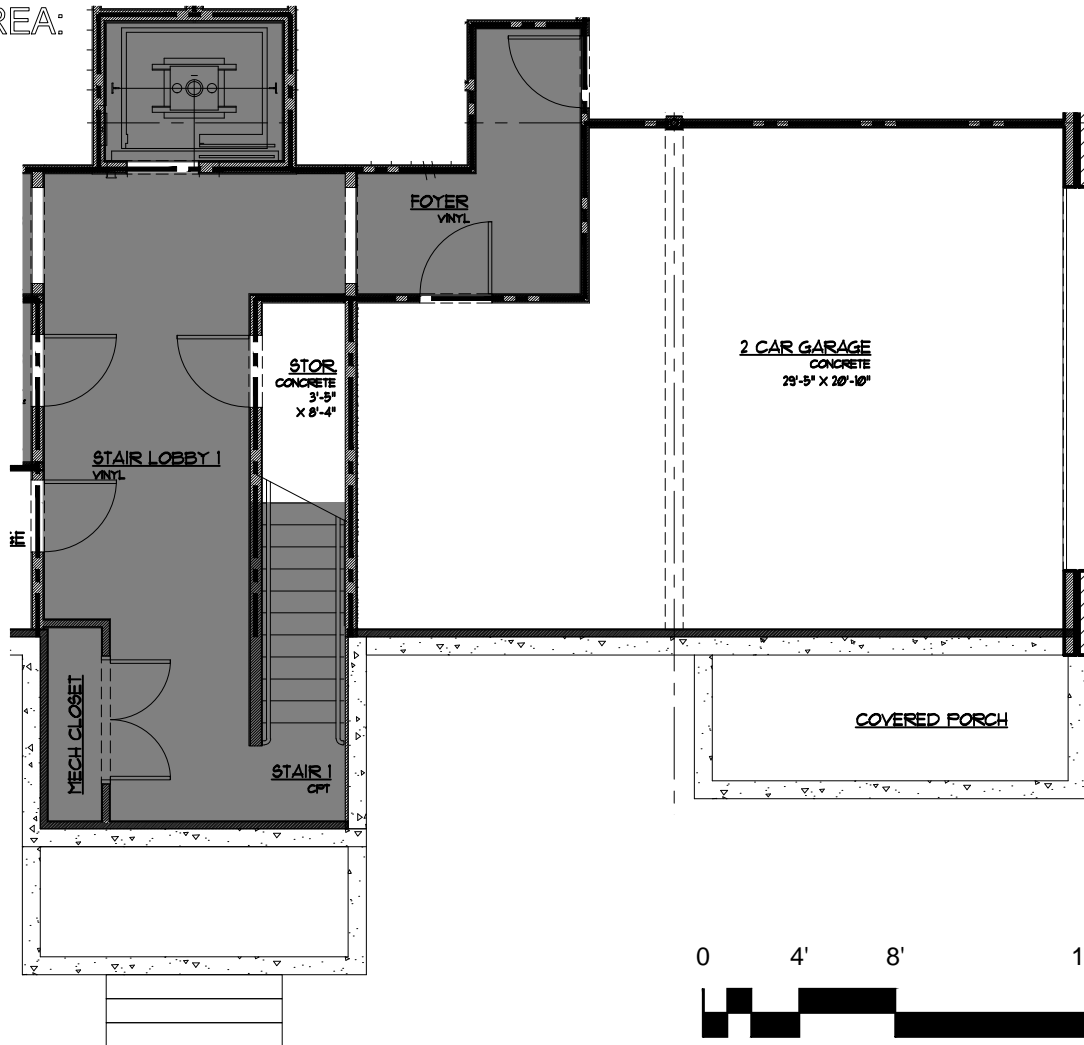
15332 ROYAL  
TROON AVE.  
LOUISVILLE, KY

BASEMENT &  
GARAGE

GARAGE  
543 SF

STORAGE:  
29 SF

TOTAL  
INTERIOR  
LIVING AREA:  
1,802 SF



1311 BARDSTOWN ROAD  
LOUISVILLE, KENTUCKY 40204  
TELEPHONE: 502.636.8844  
WWW.STUDIOAARCH.COM



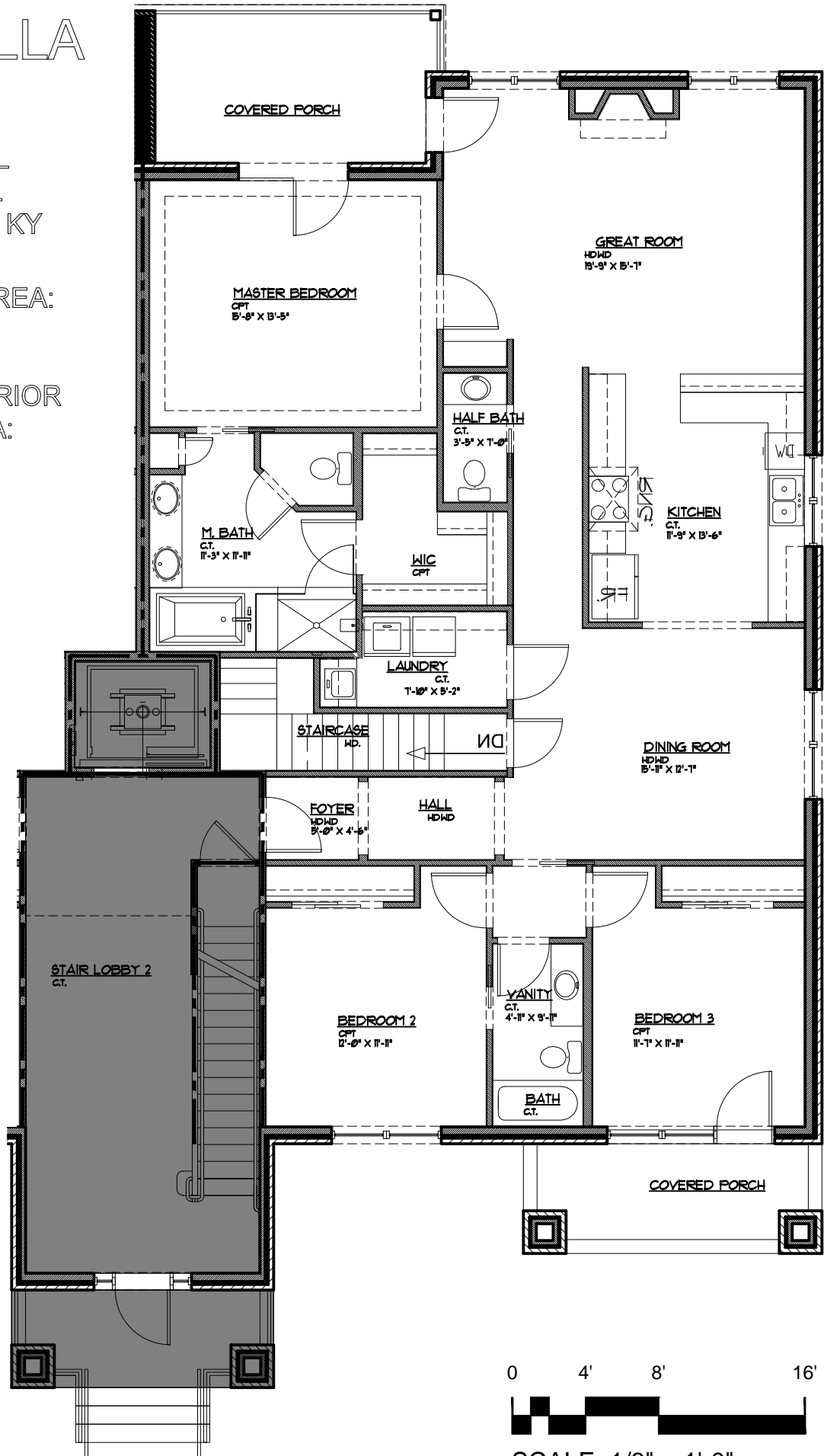
SCALE: 1/8" = 1'-0"

# VALHALLA VISTAS

15334 ROYAL  
TROON AVE.  
LOUISVILLE, KY

INTERIOR AREA:  
1,802 SF

TOTAL INTERIOR  
LIVING AREA:  
2,219 SF



# VALHALLA VISTAS

15334 ROYAL  
TROON AVE.  
LOUISVILLE, KY

BASEMENT &  
GARAGE

GARAGE: 691 SF

INTERIOR AREA:  
417 SF

TOTAL INTERIOR  
LIVING AREA:  
2,219 SF

