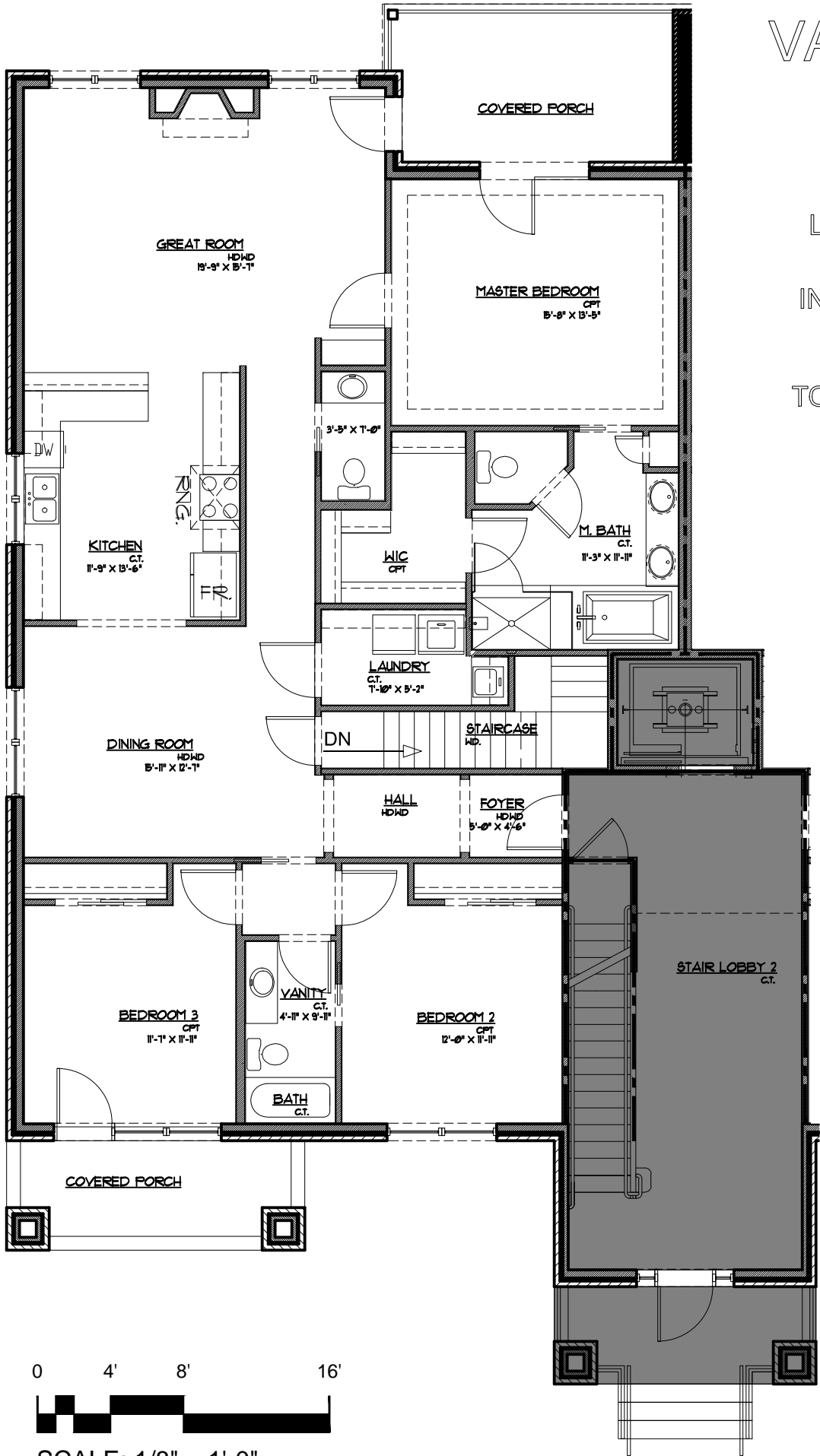


VALHALLA VISTAS

15317 ROYAL
TROON AVE.
LOUISVILLE, KY

INTERIOR AREA:
1,802 SF

TOTAL INTERIOR
LIVING AREA:
2,498 SF



0 4' 8' 16'



SCALE: 1/8" = 1'-0"

VALHALLA VISTAS

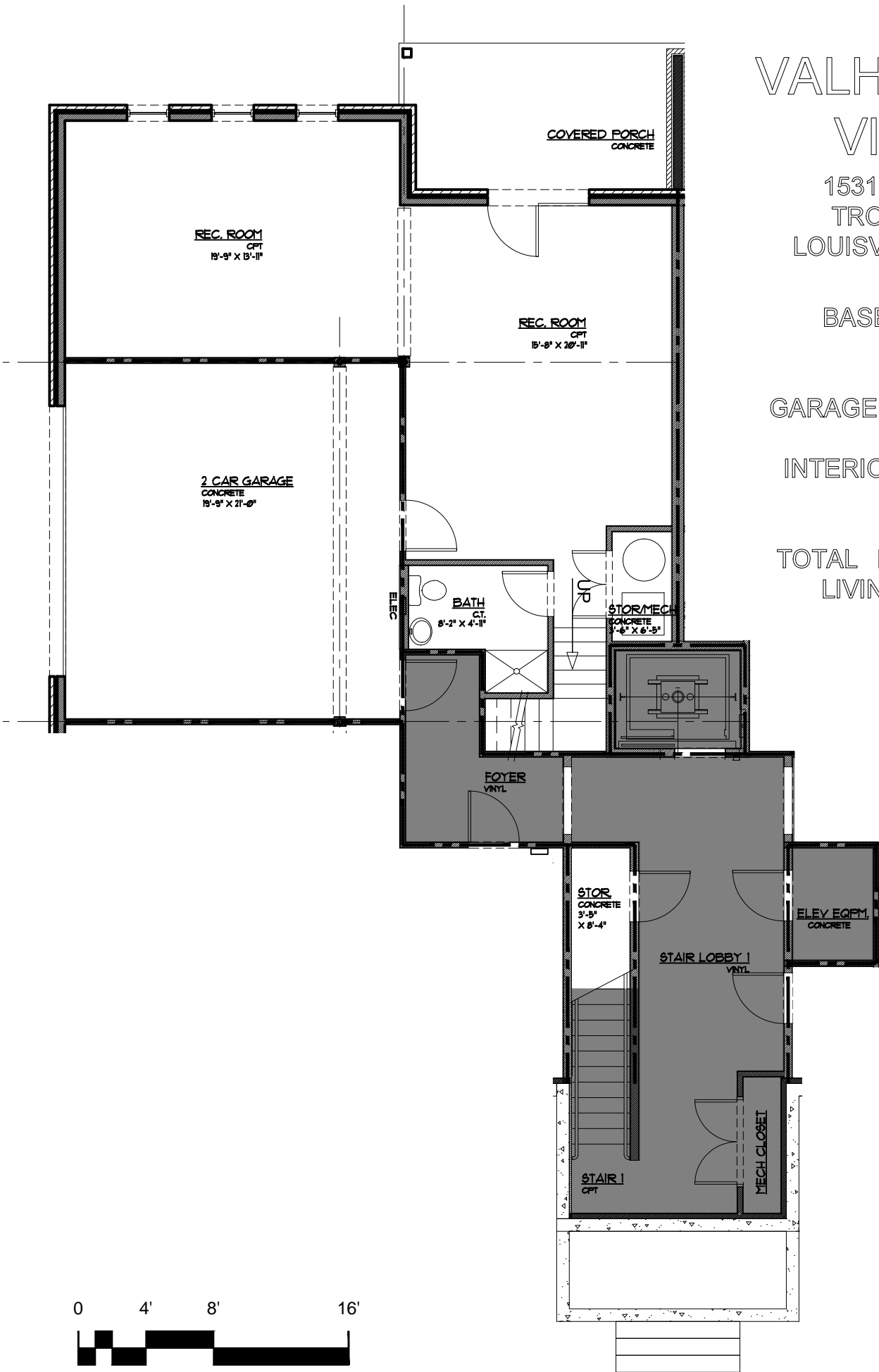
15317 ROYAL
TROON AVE.
LOUISVILLE, KY

BASEMENT &
GARAGE

GARAGE: 415 SF

INTERIOR AREA:
696 SF

TOTAL INTERIOR
LIVING AREA:
2,498 SF



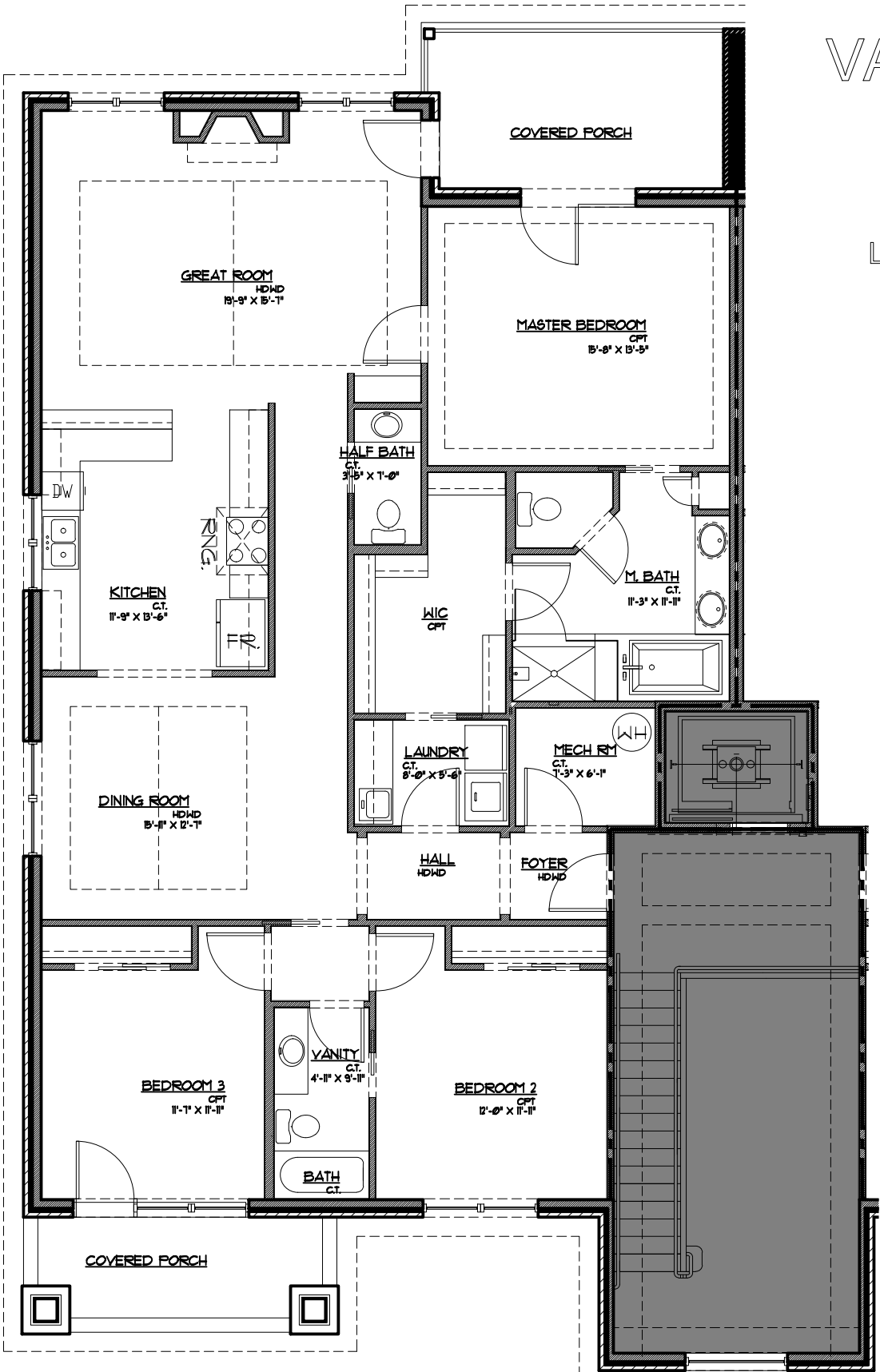
SCALE: 1/8" = 1'-0"

VALHALLA VISTAS

15319 ROYAL
TROON AVE.
LOUISVILLE, KY

TOTAL
INTERIOR
AREA:
1,802 SF

TOTAL
INTERIOR
LIVING AREA:
1,802 SF



0 4' 8' 16'



SCALE: 1/8" = 1'-0"

VALHALLA VISTAS

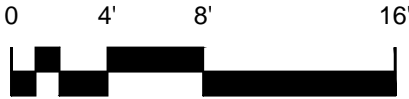
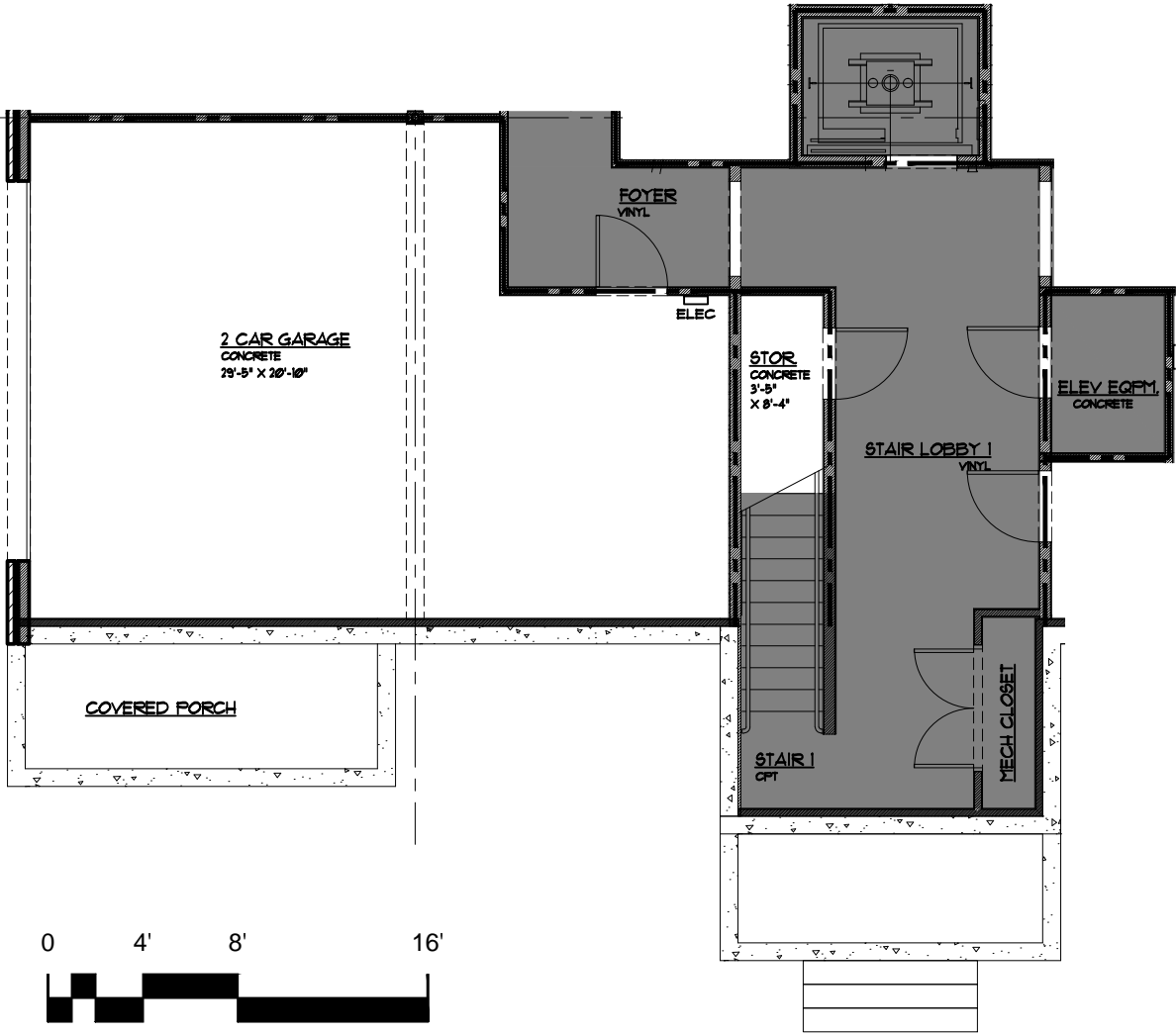
15319 ROYAL
TROON AVE.
LOUISVILLE, KY

BASEMENT &
GARAGE

GARAGE: 543 SF

STORAGE: 29 SF

TOTAL INTERIOR
LIVING AREA:
1,802 SF



SCALE: 1/8" = 1'-0"

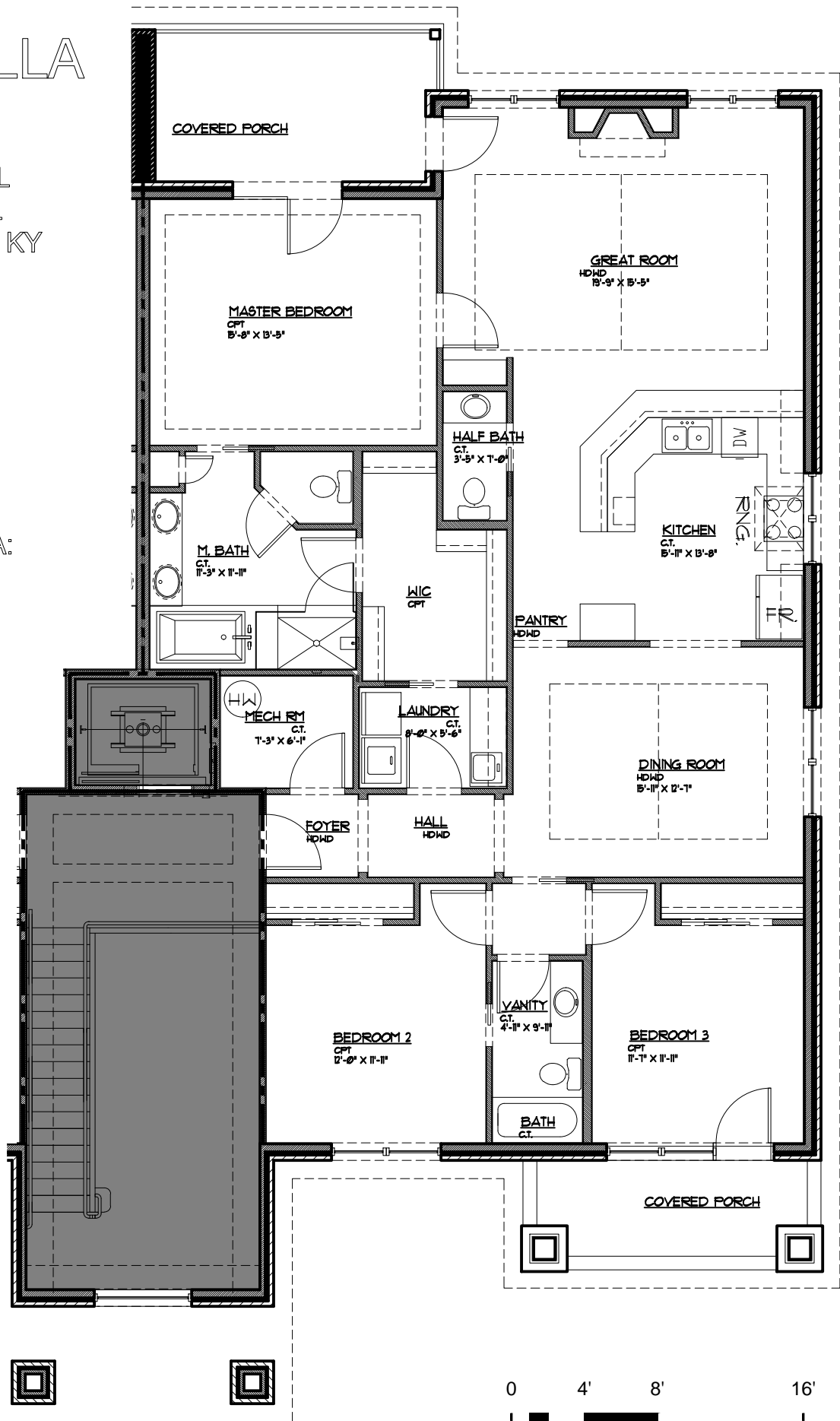


VALHALLA VISTAS

15021 ROYAL
TROON AVE.
LOUISVILLE, KY

TOTAL
INTERIOR
AREA:
1,802 SF

TOTAL
INTERIOR
LIVING AREA:
1,802 SF



VALHALLA VISTAS

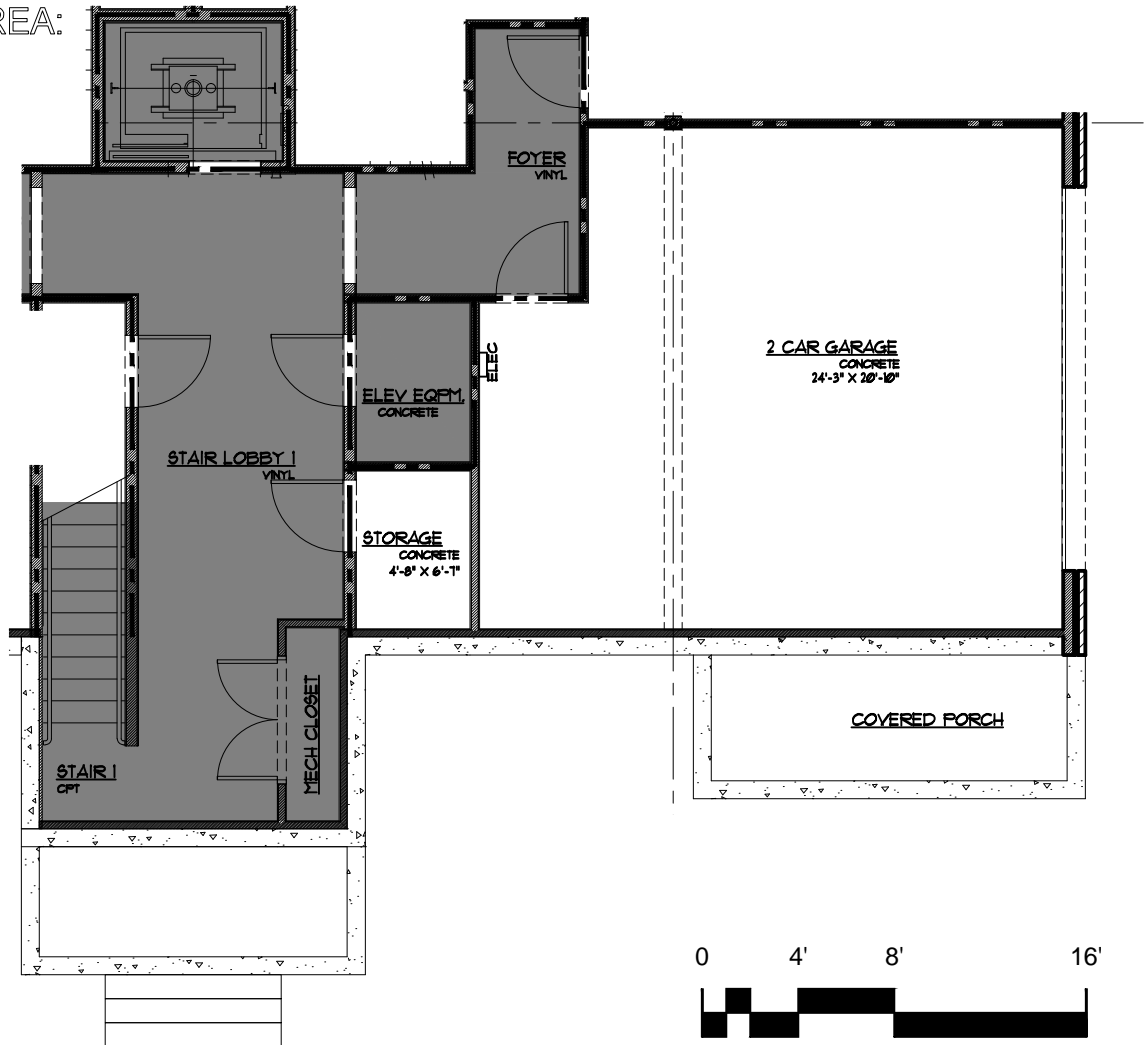
15321 ROYAL
TROON AVE.
LOUISVILLE, KY

BASEMENT &
GARAGE

GARAGE
474 SF

STORAGE:
31 SF

TOTAL
INTERIOR
LIVING AREA:
1,802 SF

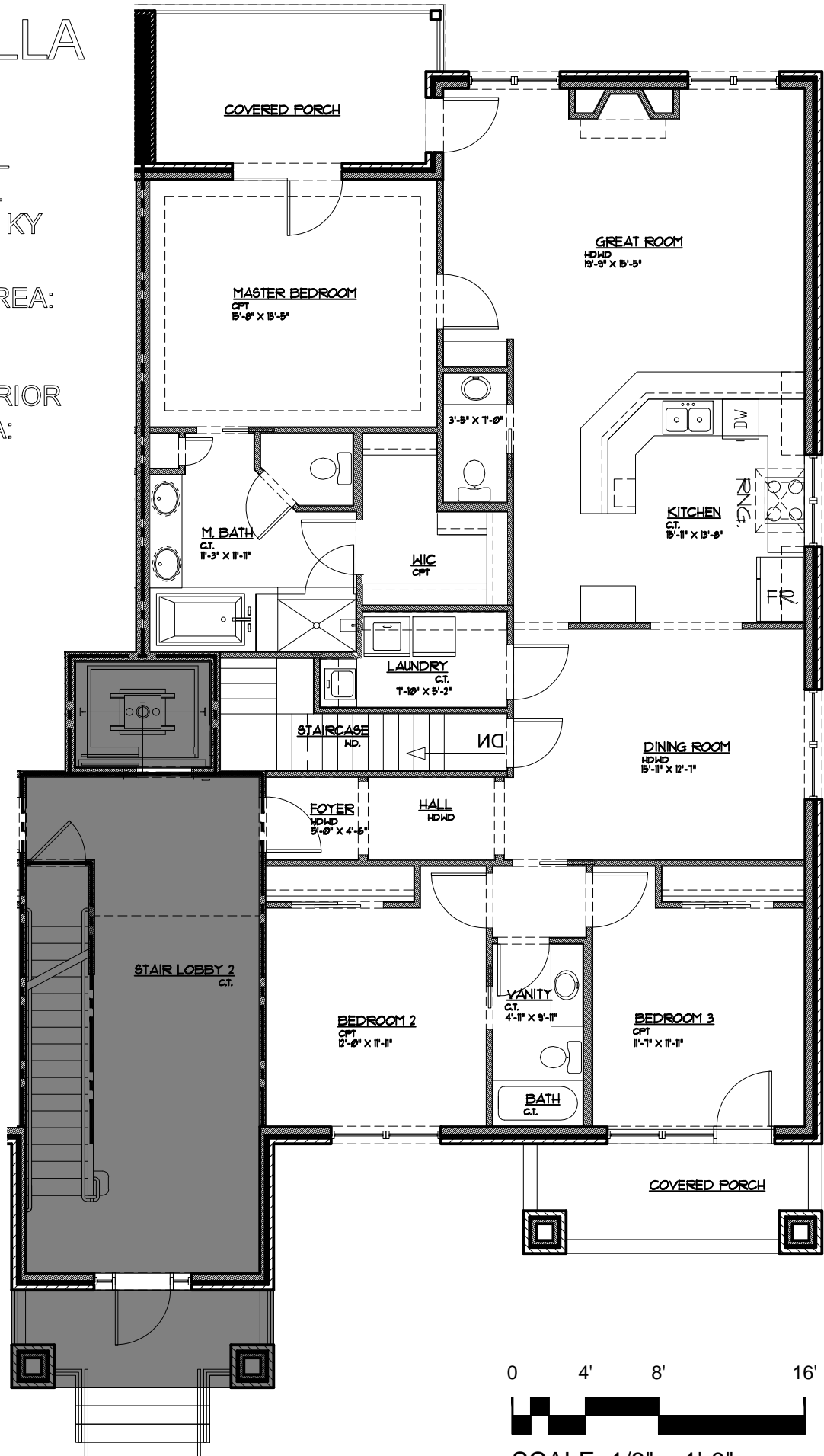


VALHALLA VISTAS

15323 ROYAL
TROON AVE.
LOUISVILLE, KY

INTERIOR AREA:
1,802 SF

TOTAL INTERIOR
LIVING AREA:
2,498 SF



VALHALLA VISTAS

15323 ROYAL
TROON AVE.
LOUISVILLE, KY

BASEMENT &
GARAGE

GARAGE: 415 SF

INTERIOR AREA:
696 SF

TOTAL INTERIOR
LIVING AREA:
2,498 SF

